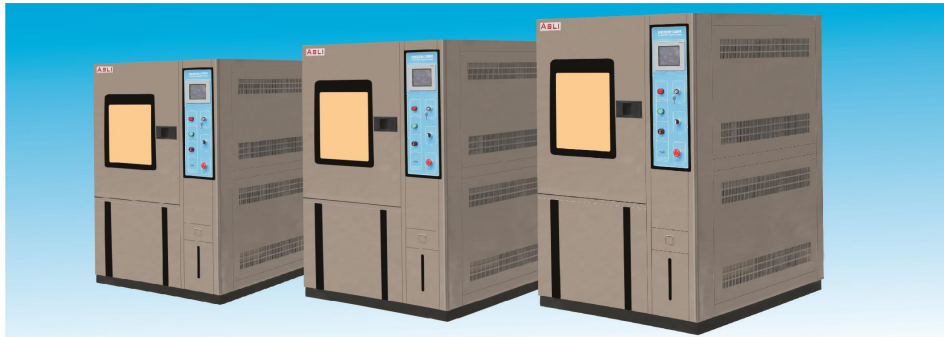


## 快速溫度變化 (ESS) 試驗機 Fast Temperature Change Test Chamber



### 產品用途：

實驗各種材料耐熱，耐寒，耐幹，耐濕性能。適合電子，電器，通訊，儀表，車輛，塑膠制品，金屬，食品，化學，建材，醫療，航天等制品檢測質量之用。

### Application:

It is used to test various types of materials for their tolerances of heat, cold, dry, humidity. It is applied for quality inspection for all types of electronic products, electric appliance, and products from communication, instrument, automobile, plastic, metal, food, chemical, building materials, medical and aerospace industries.

帶操作孔玻璃內門 (選購)	Inner door with operation hole (optional)
通電測試孔直徑50mm或100mm	Entrance hole for test wire, Dia.50mm or 100mm
置物層架 兩層	Sample Shelves, two layers
有RS232或RS485通訊接口	RS232 or RS485 communication interface

### 特點:

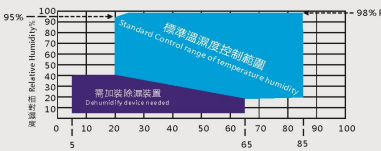
- 質感外觀，機體採用圓弧造型，表面經霧面條紋處理，並採用平面無反作用把手，操作容易，安全可靠。
- 長方形復層玻璃觀察窗口，可在實驗中進行試驗品觀察使用，窗口具防汗電熱器裝置可防止水氣凝結水滴，及高亮度PL熒光燈保持箱內照明。
- 箱門雙層隔絕氣密迫緊，可有效隔絕內部溫度泄露。
- 具可外接式供水系統，方便於補充加濕桶供水，並自動回收使用。
- 壓縮機循環系統採用法國“泰康”牌，更能有效去除凝結管與毛細管間的潤滑油并全系列採用環保冷媒(R23,R404A)。
- 控制器採用進口LCD顯示屏幕，可同時顯示測定值及設定值、時間。
- 控制器具有多段程序編輯及溫度濕度、可做快速 (OUICK) 或斜率 (SLOP) 控制
- 內置式移動滑輪便於移動及擺放并具有強力定位螺絲固定位置。

### Features

- Graceful appearance, circularly shaped body, surface treated with mist strips, and plane handle with no reaction. Easy to operate, safe and reliable.
- Rectangular double-glassed watching window for the observation of the test production during the testing process. The window is equipped with sweat-proof electrical heating device that can prevent water steam from condensing into droplets, and with high brightness PL fluorescent bulbs to provide light inside the box.
- Double-layer-insulated airtight doors, able to insulate the internal temperature effectively.
- Water supply system that is externally connectable, convenient for refilling water into the humidifying pot and automatically recyclable.
- The French "Tecumseh" brand is used for the circulation system of the compressor, capable of removing the lubricant between the condensation pipes and capillaries. The environment-protecting coolant is used for the whole series(R23,R404A)
- Imported LCD display screen is used for the control unit, capable of displaying the measured value as well as the set value and time.
- The control unit has the functions of multiples segment program editing, and of quick or slope control of temperature and humidity.
- Inserted mobile pulley, convenient for movement an relocation, with strong positioning screws.

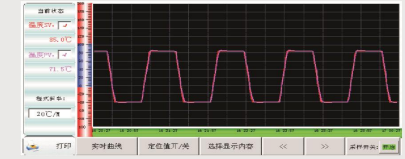
### 濕度控制能力範圍 Humidity Control Range

At +20°C Ambient temperature or +25°C Room temperature and non-loaded



### 快速溫變試驗機曲線圖

Graph of Fast Temperature Change Test Chamber



### 技術參數 Technical Parameters:

型號 Model	F-TH-150(A~F)	F-TH-225(A~F)	F-TH-408(A~F)	F-TH-800(A~F)	F-TH-1000(A~F)
內部尺寸 WxHxD (mm) Internal Dimension WxHxD (mm)	500x600x500	600x750x500	600x850x800	1000x1000x800	1000x1000x1000
外部尺寸 WxHxD (mm) External Dimension WxHxD (mm)	1100x1750x1600	1200x1800x1700	1250x1900x1900	1600x2050x2150	1700x2200x2300
快速溫度變化範圍 Range of Fast Temperature Change	溫度範圍：-70~+150°C。快速溫變範圍：-45~+85°C；全程線性控制時升降溫最快可達3°C~20°C/分鐘。 Temperature Range：-70~+150°C，Range of Fast Temperature Change：-45~+85°C； Max. Temperature rising/falling speed is 3°C~20°C/min when the whole process with linear control.				
濕度範圍(選購) Humidity Range (Optional)	20%~98%R.H.(10%~98% R.H. / 5%~98% R.H.為特殊選用條件，需加除濕系統 20%~98%R.H.(10%~98% R.H./5%~98% R.H.is a special optional condition, need Dehumidifier)				
溫濕度解析精度/分布均勻度 Analytic Accuracy/ Distribution Uniformity of Temperature and Humidity	0.1°C；0.1% R.H ±2.0°C；±3.0% R.H.				
溫濕度控制精度 Control Accuracy of Temperature and Humidity	±0.5°C；±2.5% R.H.				
升溫/降溫速率 Temperature Rising/ Falling Speed Rate	線性升降溫速率：3~20/分鐘可調；非線性升降溫速率：3~30/分鐘可調 The Temperature Rising/Falling Speed Rate with linear control：3~20/min, adjustable The Temperature Rising/Falling Speed Rate non-linear control：3~30/min, adjustable				
內外材質 Internal and External Material	內箱材質為SUS 304#不銹鋼，外箱材質為不銹鋼或SEE 冷軋鋼加烤漆。 Material of the inner box is SUS 304# stainless steel, of the outer box is stainless steel or SEE cold-rolled steel with paint coated.				
保溫材質 Insulation Material	耐高溫高密度氯基甲酸乙酯泡沫絕緣體材料 Resistant to high temperature, high density, formate chlorine, ethyl acetum foam insulation materials				
冷卻系統 Cooling System	水冷式冷卻 Water cooling				
保護裝置 Protection Devices	無熔絲開關、壓縮機過載保護開關、冷媒高低壓保護開關、超溫度超溫保護開關、保險絲、故障警告系統、缺水報警保護 Fuse-free switch, overloading protection switch for compressor, high and low voltage coolant protection switch, over-humidity and over-temperature protection switch, fuses, fault warning system, water short storage warning protection				
選購配件 Optional Accessories	帶操作孔玻璃內門、純水淨化機、除濕機 Inner door with operation hole(Optional), Water Purifier, Dehumidifier				
壓縮機/Compressor	法國“泰康”牌、德國“比則爾” French “Tecumseh” Brand, Germany “Bizer” Brand				
電源/Power	AC380V；3φ 5線；50/60HZ AC380V；3φ 5 lines；50/60HZ				
大約重量 (Kg) Approx. Weight(Kg)	250	380	500	700	850